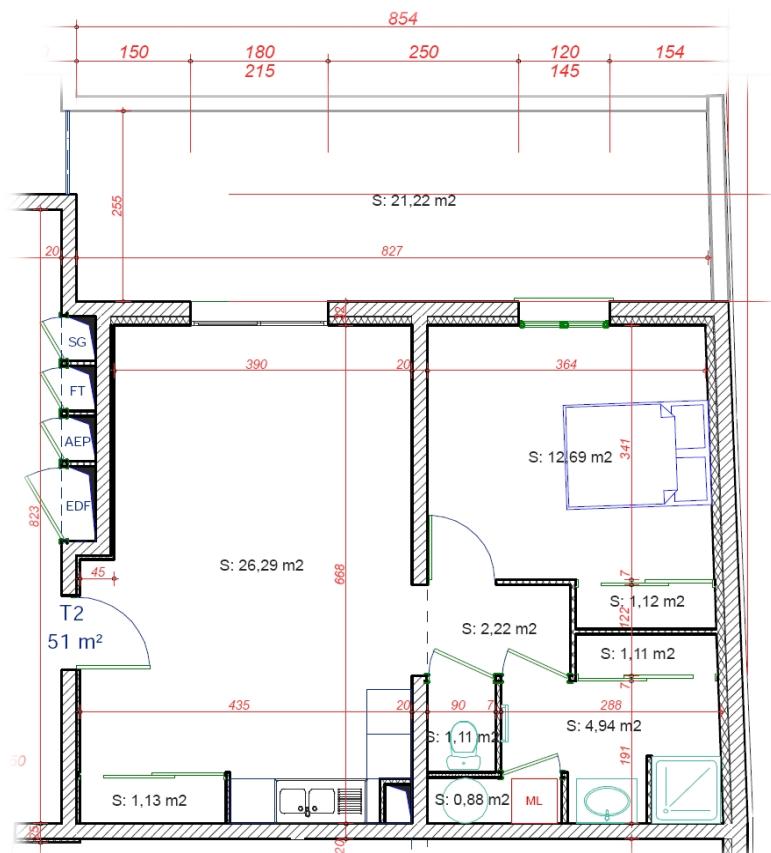


LE SIX

Saint Pierre de Boeuf



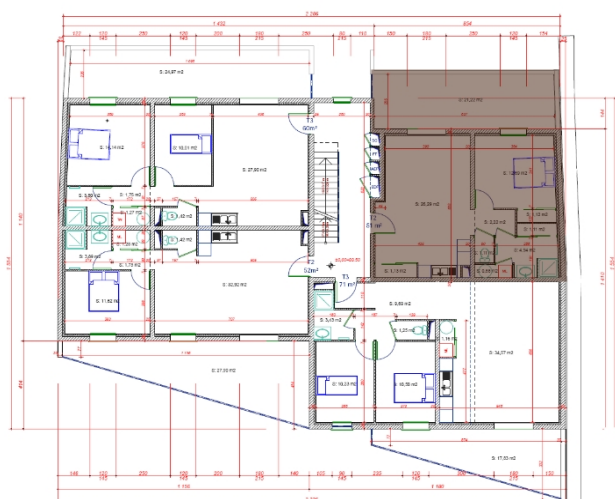
MARCH PROMOTION
PROMOTION - CONSTRUCTION - VENTE



Lot 1

Appartement type 2

Rez de chaussée

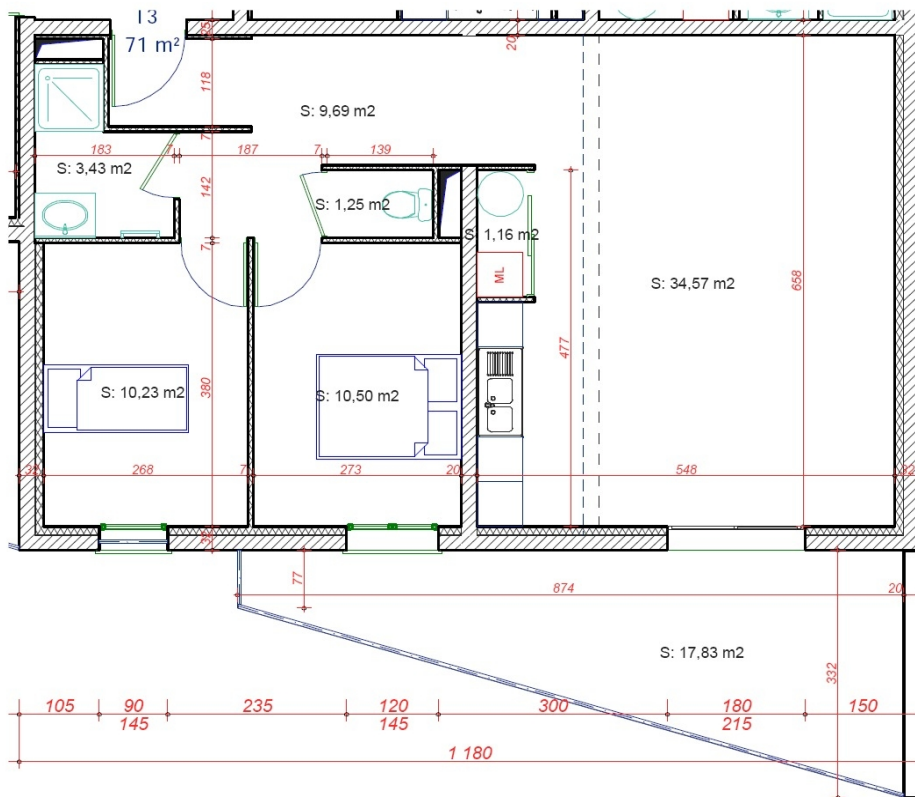


Séjour-cuisine: 26,29m²
Chambre: 12,69m²
Salle de Bain: 4,94m²
WC: 1,11m²
Dégagement: 2,22m²
Placards: 4,24m²
Terrasse: 21,22m²

Surface habitable: 51m²

LE SIX
Saint Pierre de Boeuf

MARCH PROMOTION
PROMOTION - CONSTRUCTION - VENTE



Lot 2

Appartement type 3

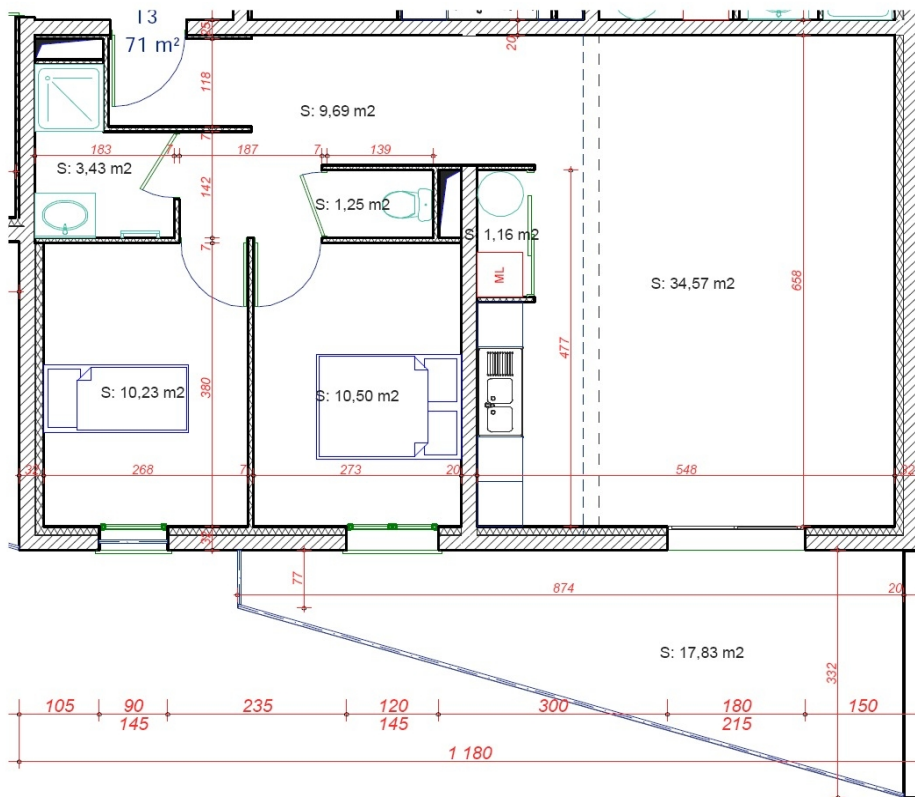
Rez de chaussée

Séjour-cuisine: 34,57m²
 Chambre 1: 10,50m²
 Chambre 2: 10,23m²
 Salle de Bain: 3,43m²
 WC: 1,25m²
 Dégagement: 9,69m²
 Placard: 1,16m²
 Terrasse: 17,83m²

Surface habitable: 71m²

LE SIX
 Saint Pierre de Boeuf

MARCH PROMOTION
 PROMOTION - CONSTRUCTION - VENTE



Lot 3

Appartement type 3

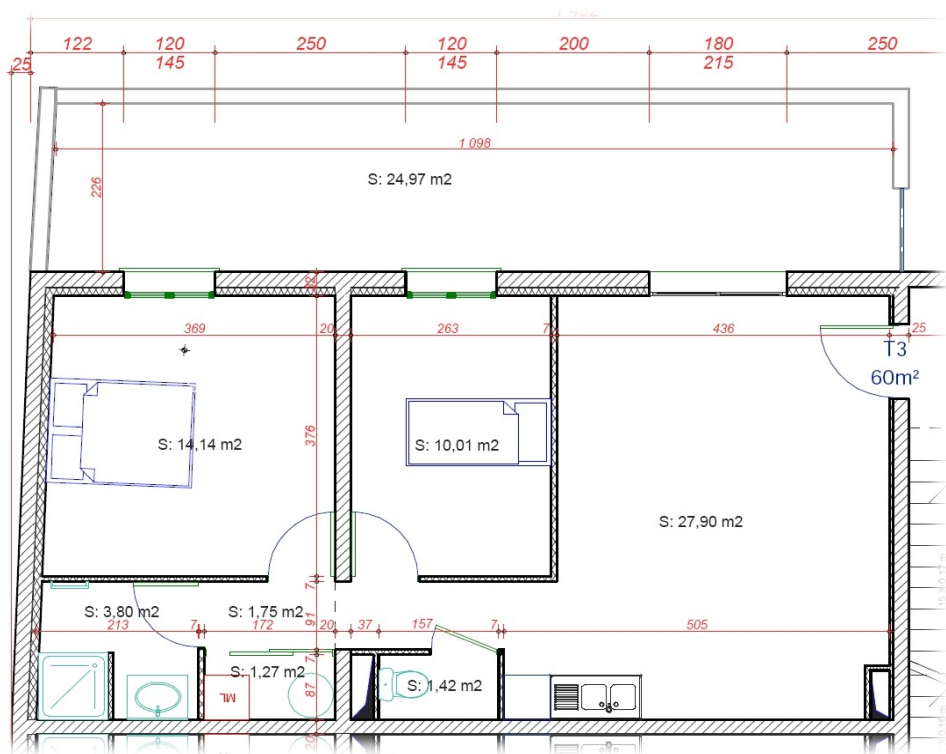
Rez de chaussée

Séjour-cuisine: 34,57m²
 Chambre 1: 10,50m²
 Chambre 2: 10,23m²
 Salle de Bain: 3,43m²
 WC: 1,25m²
 Dégagement: 9,69m²
 Placard: 1,16m²
 Terrasse: 17,83m²

Surface habitable: 71m²

LE SIX
 Saint Pierre de Boeuf

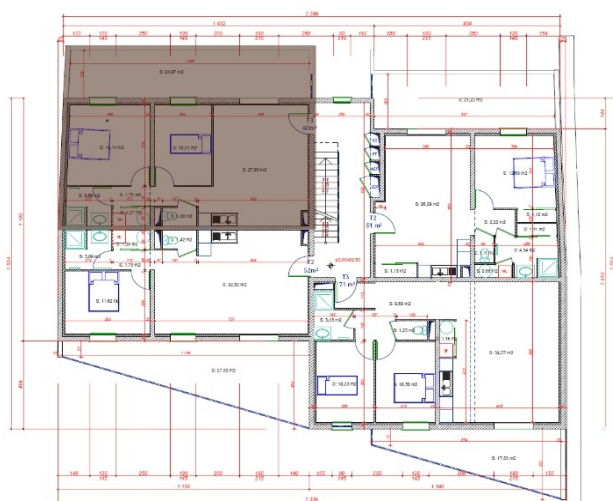
MARCH PROMOTION
 PROMOTION - CONSTRUCTION - VENTE



Lot 4

Appartement type 3

Rez de chaussée

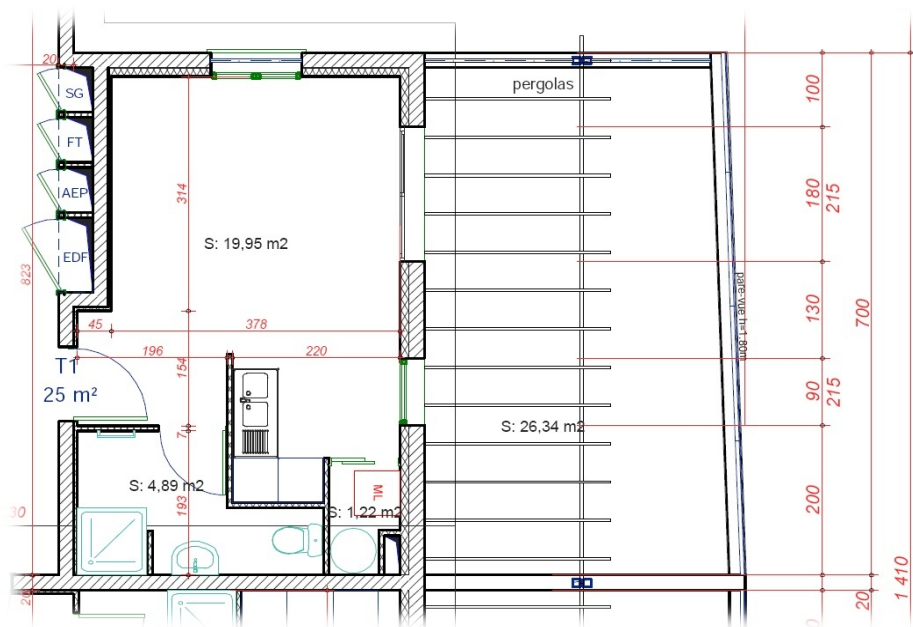


Séjour-cuisine: 27,90m²
 Chambre 1: 14,14m²
 Chambre 2: 10,01m²
 Salle de Bain: 3,80m²
 WC: 1,42m²
 Dégagement: 1,75m²
 Placard: 1,27m²
 Terrasse: 24,97m²

Surface habitable: 60m²

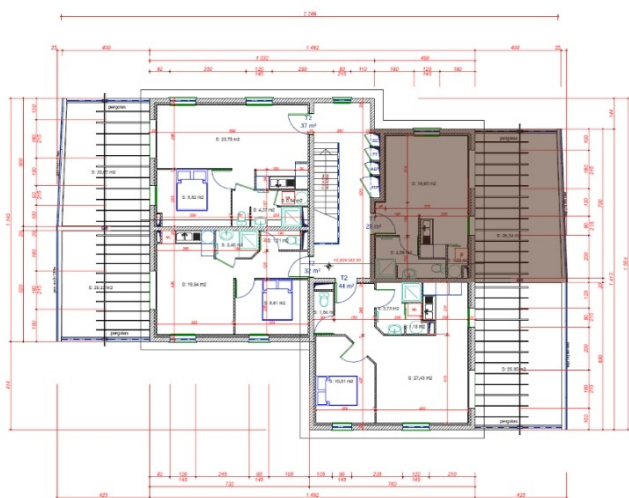
LE SIX
 Saint Pierre de Boeuf

MARCH PROMOTION
 PROMOTION - CONSTRUCTION - VENTE



Lot 5

Studio
Etage

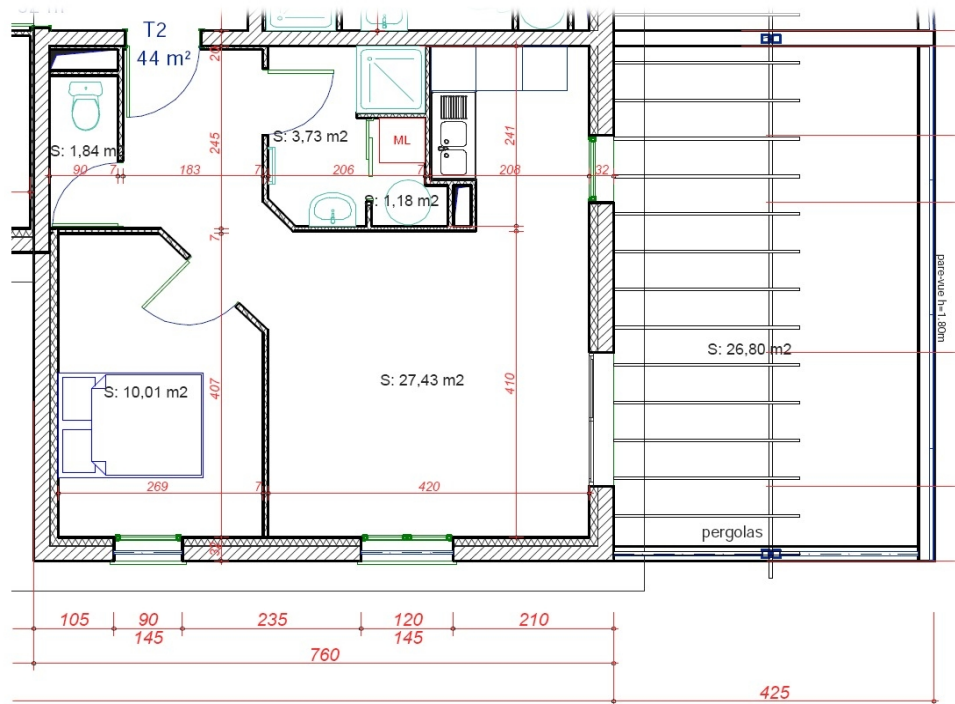


Séjour-cuisine
chambre: 19,95m²
Salle de Bain-WC: 4,89m²
Placard: 1,22m²
Terrasse: 26,34m²

Surface habitable: 25m²

LE SIX
Saint Pierre de Boeuf

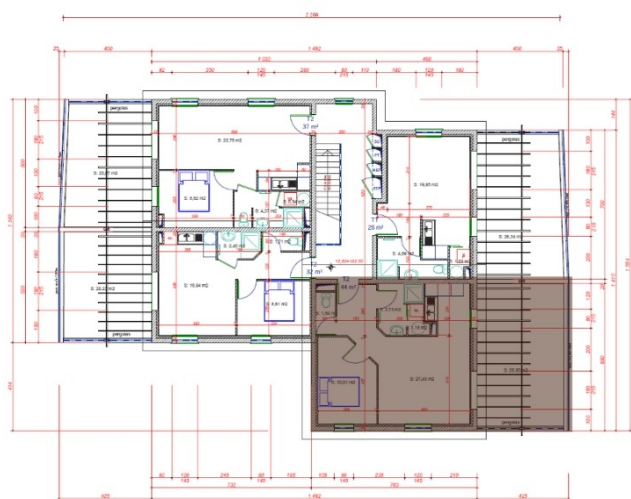
MARCH PROMOTION
PROMOTION - CONSTRUCTION - VENTE



Lot 6

Appartement type 2

Etage

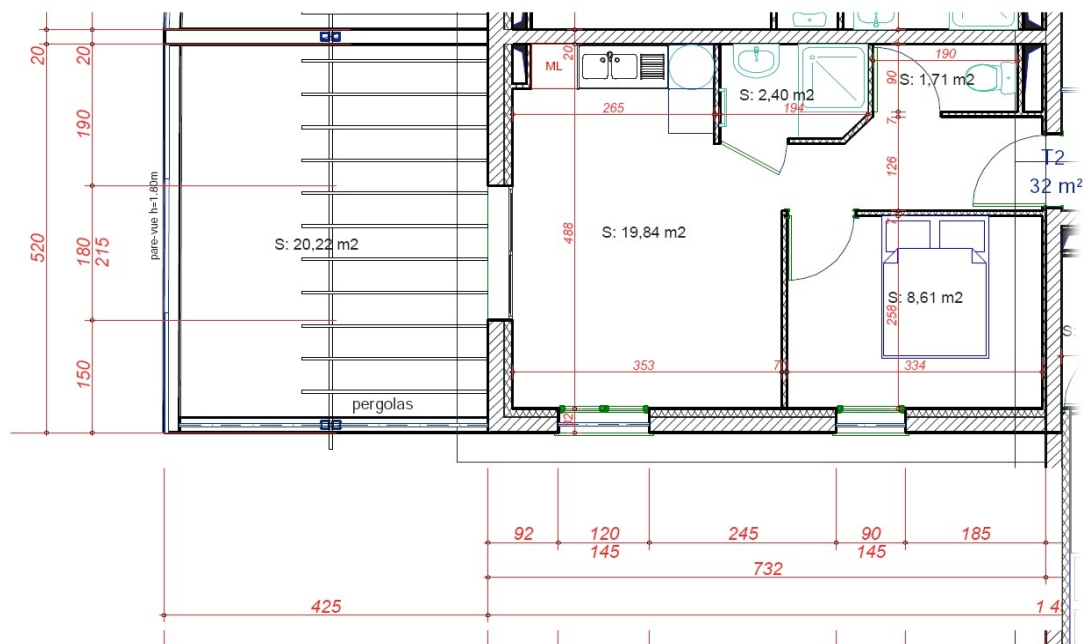


Séjour-cuisine: 27,43m²
 Chambre: 10,01m²
 Salle de Bain: 3,73m²
 WC: 1,84m²
 Terrasse: 26,80m²

Surface habitable: 44m²

LE SIX
 Saint Pierre de Boeuf

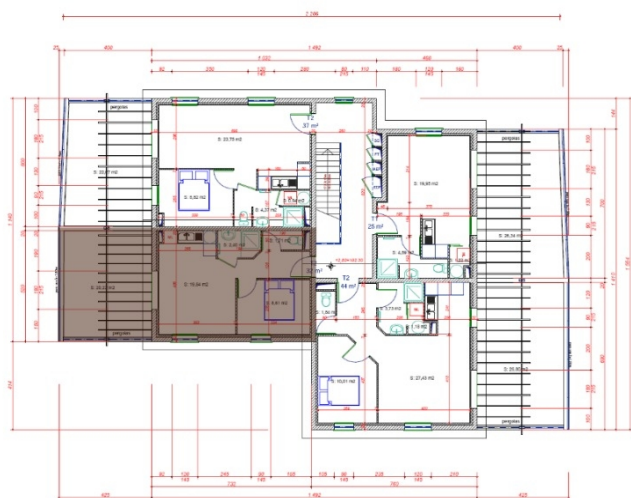
MARCH PROMOTION
 PROMOTION - CONSTRUCTION - VENTE



Lot 7

Appartement type 2

Etage

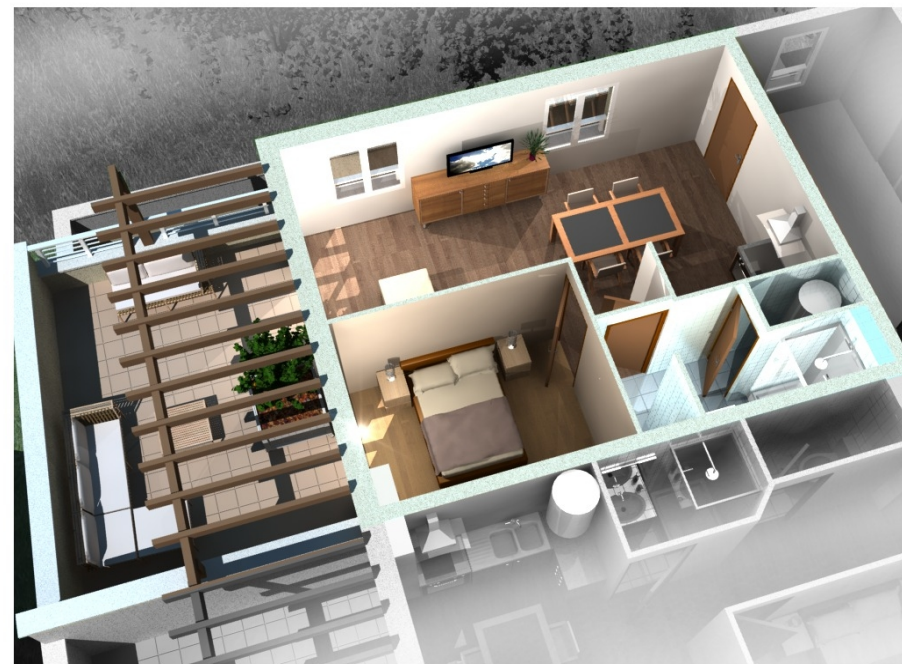
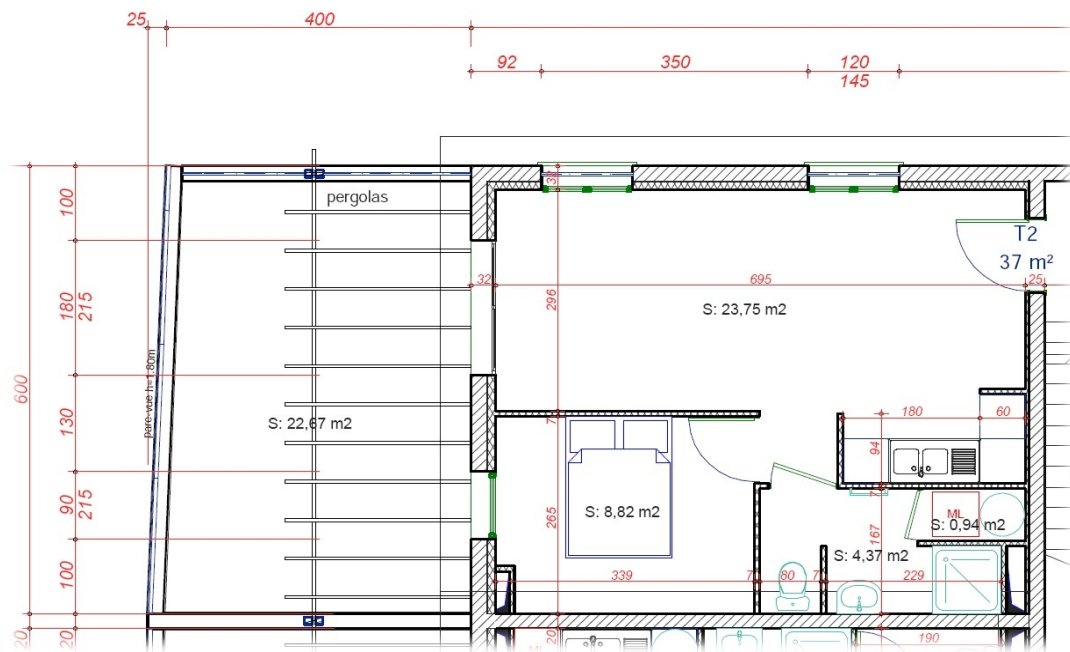


Séjour-cuisine: 19,84m²
 Chambre: 8,61m²
 Salle de Bain: 2,40m²
 WC: 1,71m²
 Terrasse: 20,22m²

Surface habitable: 32m²

LE SIX
 Saint Pierre de Boeuf

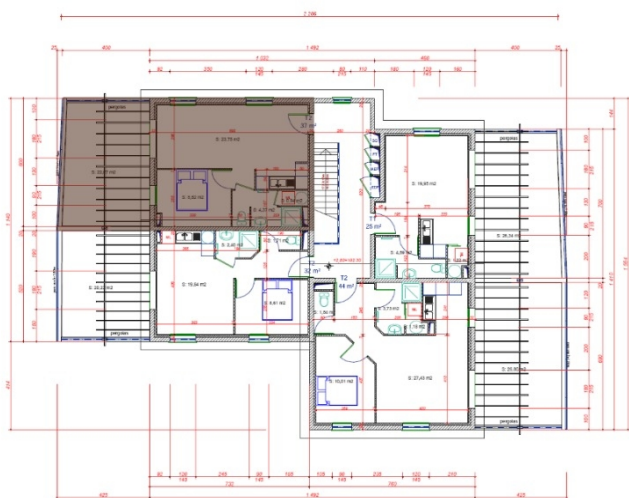
MARCH PROMOTION
 PROMOTION - CONSTRUCTION - VENTE



Lot 8

Appartement type 2

Etage



Séjour-cuisine: 23,75m²
Chambre: 8,82m²
Salle de Bain-WC: 4,37m²
Placard: 0,94m²
Terrasse: 22,67m²

Surface habitable: 37m²

LE SIX
Saint Pierre de Boeuf

MARCH PROMOTION
PROMOTION - CONSTRUCTION - VENTE